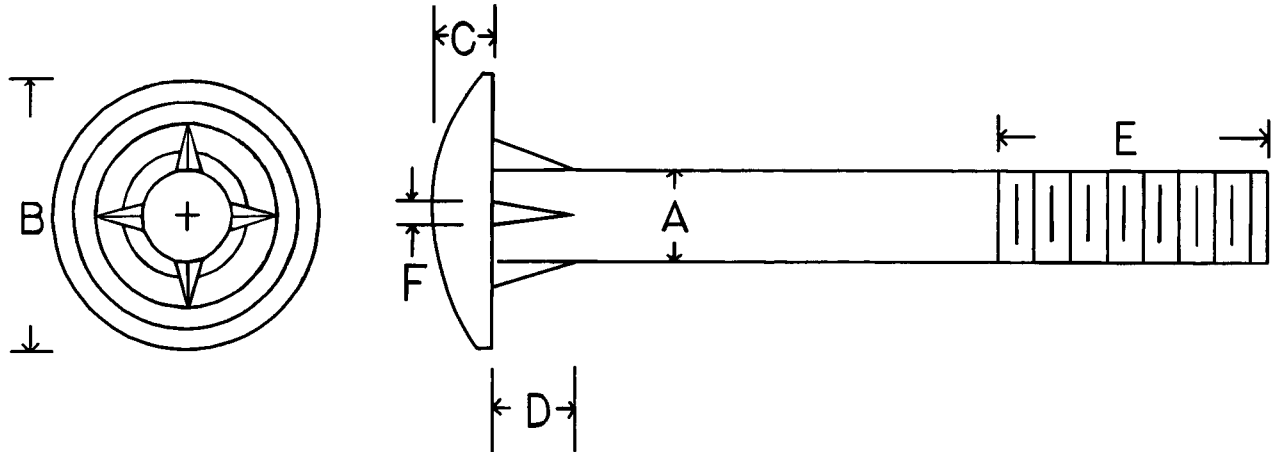




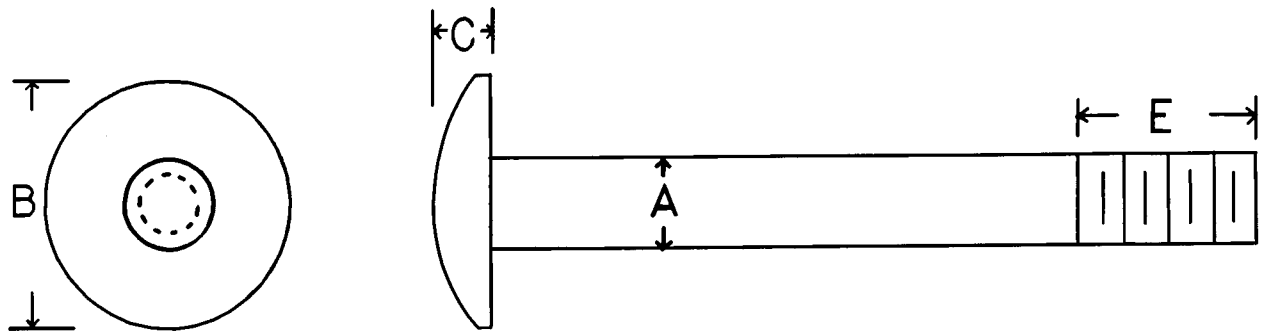
**Weather-Tuff Timber Bolts
Hot Dip Galvanized**



A	B	C	D	E*	F
1/2	1-3/4	.275	1/4	6	.200
5/8	2-1/4	5/16	5/8	6	1/4
3/4	2-5/8	7/16	3/4	6	1/4
7/8	3	7/16	7/8	6	9/32
1	3	1/2	1	6	5/16

* On bolts over 12" in length

**Dome Head Bolts
Hot Dip Galvanized**



A	B	C	E*
5/8	2-1/4	5/16	6
3/4	2-5/8	7/16	6
7/8	3	7/16	6
1	3	1/2	6

* On bolts over 12" in length