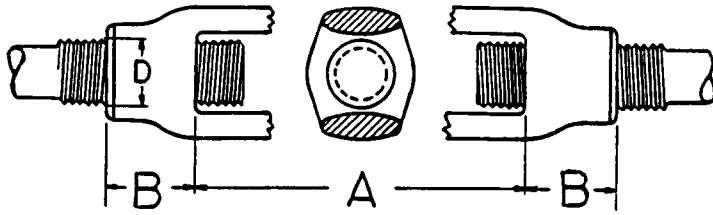


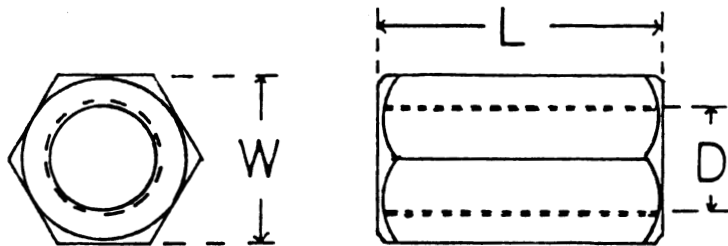


Turnbuckle Bodies



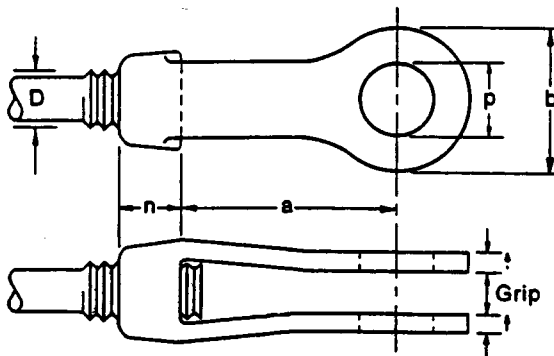
Thread Dia. Inches D		Take-Up Inches A	Grip Inches B
1/2	x	6,9,12	0.75
5/8	x	6,9,12	0.94
3/4	x	6,9,12,18	1.13
7/8	x	6,12,18	1.31
1	x	6,12,18,24	1.50
1-1/8	x	6,12	1.56
1-1/4	x	6,12,18,24	1.56
1-3/8	x	6,12	1.88
1-1/2	x	6,12,18,24	1.88
1-5/8	x	6	2.19
1-3/4	x	6,12,24	2.19
2	x	6,12,24	2.50
2-1/4	x	6	3.38
2-1/2	x	6,12,24	3.75
2-3/4	x	6,24	4.13
3	x	6,12,24	4.50
3-1/4	x	6,9,12	5.25
3-1/2	x	6,9,12	5.25
4	x	6	6.00
4-1/2	x	9	6.75

Coupling Nuts



Thread Dia. Inches D		Length L	W
1/2	x	1-3/4	11/16
5/8	x	2-1/8	13/16
3/4	x	2-1/4	1
7/8	x	2-1/2	1-1/4
1	x	2-3/4	1-3/8
1-1/8	x	3	1-1/2
1-1/4	x	3	1-5/8
1-3/8	x	3-3/8	1-7/8
1-1/2	x	3-1/2	2
1-3/4	x	4	2-3/8
2	x	4-1/2	2-3/4
2-1/2	x	5-1/2	3-1/2
3	x	8	4-1/2
3-1/4	x	9	5
3-1/2	x	10-1/4	5-3/8
3-3/4	x	11	5-3/4
4	x	11-1/4	6-1/8

Clevises



No.	D Max.	P Max.	B	N	A
2	5/8	3/4	1-7/16	5/8	3-7/8
2-1/2	7/8	1-1/2	2-1/2	1-1/8	4
3	1-3/8	1-3/4	3	1-5/16	5
3-1/2	1-1/2	2	3-1/2	1-5/8	6
4	1-3/4	2-1/4	4	1-3/4	6
5	2-1/8	2-1/2	5	2-1/4	7
6	2-1/2	3	6	2-3/4	8
7	3	3-3/4	7	3	9
8	4	4	8	4	10