



Technical Information

2090 Fender

Description	Ultra High Molecular weight polyethylene (UHMW) Fendering Material, UV Stabilized, Low Friction, Non-Marring To Help Reduce Dock Maintenance And Ship Damage	
Molecular Weight	3 - 6 Million	
Density G/CM3	.94	ASTM D 792
Hardness, (D/15) Shore D Scale	68	ASTM D 2240
Tensile Modulus Of Elasticity	90,000 Minimum	ASTM D 638
Tensile Strength***	4000 - 5000 PSI	ASTM D 638
Coef Of Friction		
Static	.15 - .23	ASTM D 1894
Kinetic	.1 - .15	
Brittleness Temp****	N/A	

***** Tensile is 4000 minimum on 2090 material, however 2090 has had no record of break in any fendering application**

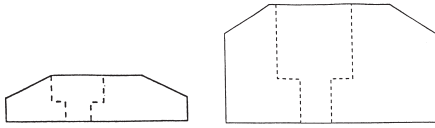
****** Brittleness Temp Is N/A, however 2090 material maintains its mechanical properties to -450 degrees F**

Ultra High Molecular Weight Meets ASTM D 4020 With The Above Specifications



solidur®

Fender Rub Strips



cross sections of typical sizes

For:

- Private Loading Docks
- Marinas
- Larger Ferry Landings
- Dock and Barge Protection

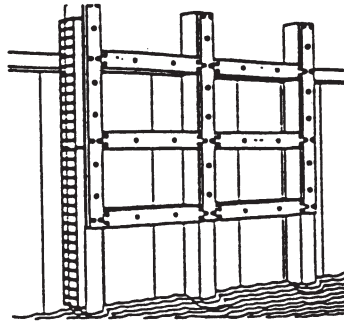
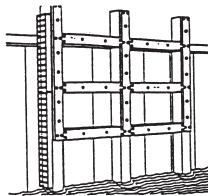
No rotting; low friction; high abrasion and impact strength. Lengths to 20 feet. Special longer lengths upon request.

Available Grades:

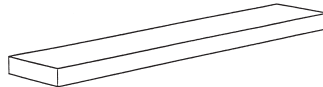
2090 Recycled UHMW-PE economy color - black
 PFG Premium Fender grade virgin UHMW-PE, any color

To Order Specify:

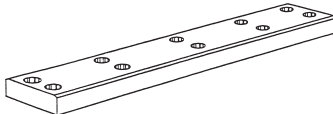
1. Grade
2. Color
3. Dimensions
4. Counter Bore Holes
5. Bevels



Solidur Fender Designs Fender Bar Shapes



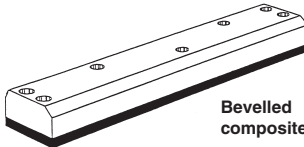
Machined and unmachined rectangular shapes



Rectangular and Square Section Fenders offer versatile fendering possibilities by themselves or, if even more impact absorption is needed, with rubber backing.

(Order Code FRS-T, W, L)

T	W	L
1"-6"	4"-23-3/4"	to 120°
1"-4"	4"-23-3/4"	to 240°

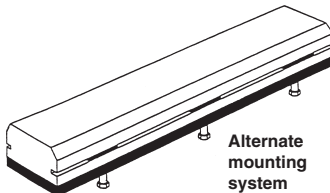


Bevelled composite

Bevelled Composite Fenders were designed in conjunction with the U.S. Army Corps of Engineers for lock and dam projects.

(Order Code FBC-T, W, L)

T	W	L
4"-6"	4"-23-3/4"	to 120°
Rubber		
1"-6"	4"-23-3/4"	to 120°



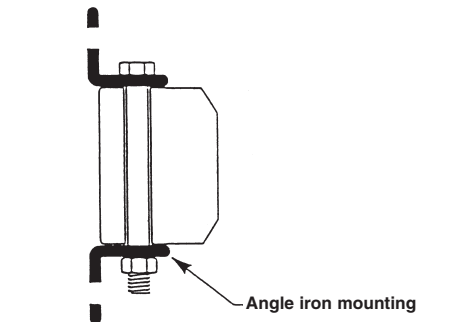
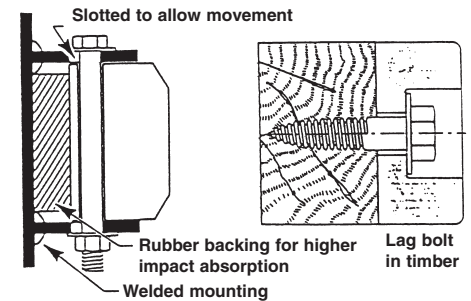
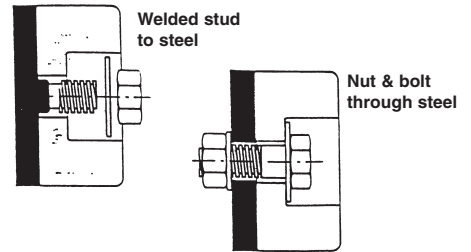
Alternate mounting system

Alternate Mounting Systems are available. The system shown has a smooth, unbroken impact face, through the use of threaded metal plates inserted in the machined channel in the side.

(Order Code FAM-T, W, L)

T	W	L
1"-6"	4"-23-3/4"	to 120°
1"-4"	4"-23-3/4"	to 240°

Mounting Solidur Fenders



Applications:

- Harbor construction
 - Individual profiles on quay walls
 - Large panels to cover large areas
 - Fendering to cover wood and rubber
 - Protection for oil tanker berths
 - Ferry terminal loadings
- Offshore
 - Fenders for steel structures
 - Offshore pump stations for tankers
 - Fenders for pipeline & cable laying vessels
- Locks
 - Approach wall fenders
 - Protection for lock gates
 - Sealing strips for lock gates
 - Facings for stand-off fenders
 - Stop log facings to prevent freezing
- Floating Docks
 - Wear plates where dock meets pilings
 - Bushings for pivots
- Fenders
 - Slides
- Dredges
 - Side wall fenders to protect dredge from barges
 - Spud well linings and guides
- Boats
 - Rub rails
 - Low friction bushings
 - Keels and rudders
- Buoys
 - Fenders for tanker buoys
 - Fenders for electronic data buoys
 - Fenders for lighthouse buoys
- Pilings
 - Fenders
 - Wear bars and slides
- Davits and boat lifts
 - Slides and wear bars
 - Fenders for lift area
- Truck docks
 - Fenders for weather seal and dock plate protection

Can't Find Something?

CALL US! (800) 446-8056