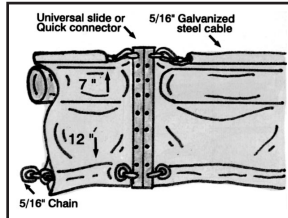


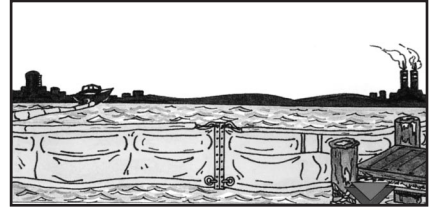


Our Mark II Boom Systems will stand up to a beating and continue to perform well.

Mark II Oil Boom

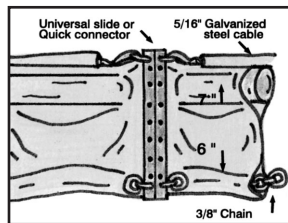


The Mark II Oil Boom is the most widely used design today. With its upper and lower tension members it provides greater tensile strength for towing, sweeping, containment and diversion of a spilled product. Like all Mark II Boom Series, this boom can be deployed from a work boat, barge, boxed or open trailer, or right from the dock. This boom is ideal for use in waters that range from a slight chop to choppy. Able to be towed with small boats in lengths up to 1,000 feet. It conforms well to the surface and its overall strength works very well for containing light debris, soft ice and of course, spilled product.

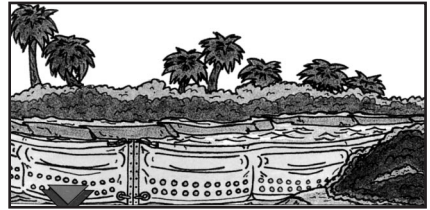


Mark II Oil Boom

Mark II-A Wetlands Boom

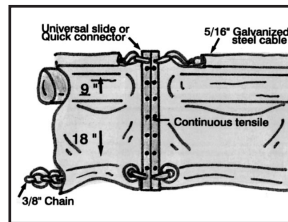


The Mark II-A Boom System is ideal for shallow water applications such as swamps, beaches or wetlands. With its high tensile strengths and shorter draft, this boom can be towed with a jon boat in shallow waters. The heavier chain ballast allows the skirt area to hug the contour of the bottom and give you maximum containment of spilled product or debris. Ideal for locations with slight to moderate chop on the water, this boom will provide a high degree of stability.



Mark II Fast Water Boom

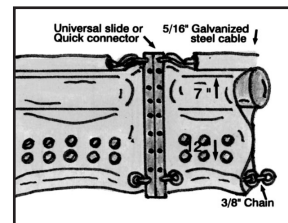
Mark II-B Contractors Boom



The Mark II-B, or Contractors Boom, is a boom system with a slightly higher freeboard, deeper draft and greater overall tensile strength. Towing capabilities can range up to 1,000 feet depending on severity of conditions. Excellent properties for using as a diversionary boom, yet still light enough for deployment by as few as (2) people. Containment capabilities of product and debris are outstanding in moderately choppy conditions.

If you have been searching for a boom system that will function in the worst of situations, you will appreciate the MARK II Group. It can stand up to a beating and continue to perform well. It requires minimum manpower and cleans up easily. All Mark II Booms have the sweeping power, diversionary power and rugged tensile strength for swift multiple deployments, tidal changes, currents, towing and recovery. It comes in (4) standard sizes to fit your requirements; or have one custom made to your specifications.

Mark II Fast Water Boom



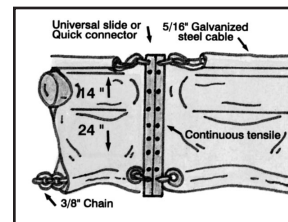
The Mark II Fast Water Boom has the same capabilities as our standard Mark II Series of booms, but is used in special applications. Designed for fast water containment of spilled products or debris, the skirt has two rows of pressure relief holes to relieve the buildup of any back pressure to substantially reduce entrainment of product. With two tension members, this boom still has the heavy duty towing capabilities as our other Mark II booms. This boom maintains a high degree of stability even in the worst conditions and swiftest currents.

MARK II Specifications

Standard in all ABBCO Boom Systems:

Double sealed, water tight, flotation compartments, double abrasion resistant ballast pockets, 1" wide vertical seals, and 1-1/2" minimum width continuous horizontal seal, and fold joints. High visibility polyester/nylon reinforced vinyl fabrics and a choice of either toggle pin or a thumbscrew on the "Tool Free" Universal Quick Connector or Universal Slide Connector. (ASTM)

Mark II-C Nearshore/Offshore Boom



Used mainly off a coast line, this boom has a larger freeboard area to maximize its buoyancy and contour over large waves or swell in the open water. Also with a much deeper draft, this boom can maintain containment of heavy crude spills in the harshest sea water; this boom can also be deployed from a large work boat platform or barge with minimum personnel. Overall performance remains very high even in heavy debris or ice conditions.

MARK II Boom Specifications	Freeboard	Draft	Overall	Weight/FT	Standard Length	Ballast Tensile	TOTAL Tensile Strength
Mark II Oil or Fast Water Boom	7 inches 17.8 cm	12 inches 30.4 cm	19 inches 48.3 cm	2.0 lb .91 kg	100 feet 31 m	5/16" Chain 8mm	24,500 lbs 11,123 kgs
Mark II-A Wetlands Boom	7 inches 17.8 cm	6 inches 15.2 cm	13 inches 33 cm	2.3 lb 1.04 kg	100 feet 31 m	3/8" Chain 9.5 mm	24,300 lbs 11,032 kgs
Mark II-B Contractors Boom	9 inches 22.9 cm	18 inches 45.7 cm	27 inches 68.6 cm	2.9 lb 1.32 kg	100 feet 31 m	3/8" Chain 9.5 mm	29,000 lbs 13,166 kgs
Mark II-C Nearshore-Offshore Boom	14 inches 35.6 cm	24 inches 61 cm	38 inches 96.5 cm	3.2 lb 1.45 kb	100 feet 31 m	3/8" Chain 9.5 mm	30,500 lbs 13,847 kbs