



## PermaFloat®

Meets "Army Corps of Engineers" Standards & "Hunt Water Absorption Test"

## Float Drums

### Flash Dot® Dock Finder

#### Features

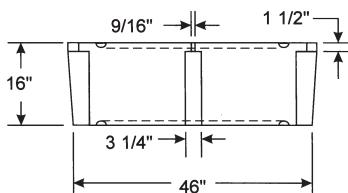
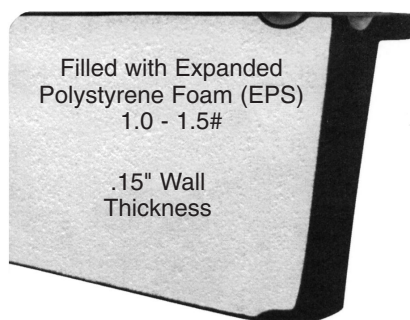
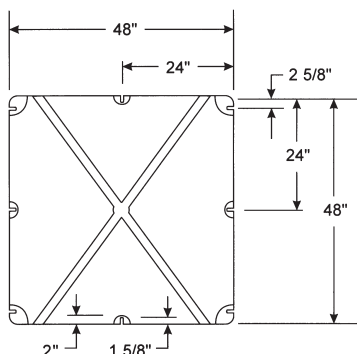
- Rugged, Seamless, Rotationally Molding Encasement
- Expanded Polystyrene (EPS) Foam Filled
- Ten (10) Year Warranty
- Molded Mounting Slots and Pilot Holes
- Maintenance Free
- .150 Nominal Wall Thickness
- Resists Saltwater, Oil, Gas and Marine Life
- Installs Quickly to Wood, Steel or Aluminum Frames
- Threaded Vent Plug
- Meets Corps of Engineers Regulation #36CFR Part 27
- Reflective "FLASH DOT®" Takes the Guess Work Out of Night Docking!

#### Materials

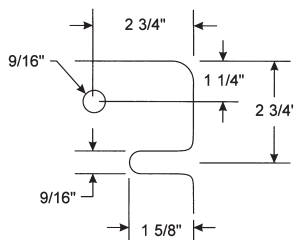
- Virgin Grade Polyethylene Resin with UV Inhibitors
- Virgin Expanded Polystyrene (EPS)

### Typical PermaFloat Configuration

(This drawing is for a 48" x 48" x 16" drum)



#### Corner Detail



We also ship our unique, Reflective "FLASH DOT®" with all float drum orders! "Flash Dot" takes the guess work out of night docking!

### Specifications

SIZE	CU. FT.	WT. (LBS)	BUOYANCY (LBS)
24" x 48" x 12"	8.0	30	450
24" x 48" x 16"	10.7	36	604
24" x 48" x 20"	13.3	41	759
36" x 48" x 12"	12.0	41	679
36" x 48" x 16"	16.0	49	911
36" x 48" x 20"	20.0	57	1143
36" x 72" x 16"	24.0	67	1373
36" x 72" x 20"	38.0	84	1716
48" x 48" x 12"	16.0	52	908
48" x 48" x 16"	21.3	63	1217
48" x 48" x 20"	26.6	74	1526
48" x 72" x 12"	24.0	78	1362
48" x 72" x 16"	32.0	92	1828
48" x 72" x 20"	40.0	105	2295
48" x 96" x 12"	32.0	104	1816
48" x 96" x 16"	42.7	122	2278
48" x 96" x 20"	53.3	143	3057

**For More  
Information  
Call Us**