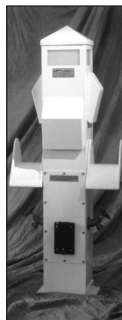




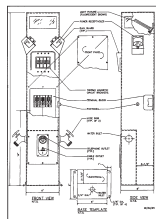
Slim Line Dockside Electrical Pillars



SPC-36-4T



SPC-36-2A



Typical Line Drawing



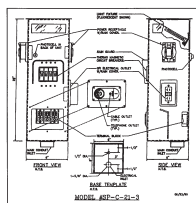
Standard features:

- Dimensions: 6" x 6" x 36" (Height)
- Casing: Maximum four receptacles (6 poles)
- Extruded aluminum 6063 with 1/8" wall thickness
- Welded base for extra strength
- All stainless steel fasteners and hinges
- Isolation plate to separate water, telephone and TV from "electrical" (completely waterproof)
- Each receptacle protected by a thermal magnetic circuit breaker
- Marine grade electrical receptacles are available in 20 amp duplex GFI and 20, 30 and 50 amp twist-lock®
- Electrical distribution block - direct feed - maximum wire size 2Ø
- Plastic three sided lens
- Cone top
- Powder coated white
- 15 year unconditional warranty on structural integrity of casing
- Listed by qualified testing agency

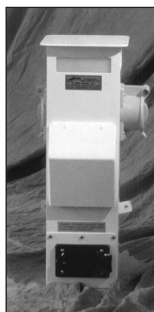
Options:

- Power block - loop feed - maximum wire size 250 MCM cable
- TV/telephone receptacles
- PL-7 fluorescent light and photo cell
- Thermo plastic receptacle covers
- Aluminum covers with receptacle mounted on a 45° down angle
- Electric meters
- Water meters externally mounted with locking ball valves
- Hose holders / cable brackets
- European power receptacles
- Flat top
- Natural finish and custom colors available

Piling Mounted Electrical Power Centers



Typical Line Drawing



SPC-21-3T



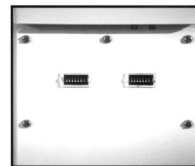
Standard Features:

- Dimensions: 6" x 6" x 21" (Height)
- Casing: Maximum three receptacles (6 poles)
- Extruded aluminum 6063 with 1/8" wall thickness
- All stainless steel fasteners and hinges
- Each receptacle protected by a thermal magnetic circuit breaker
- Marine grade electrical receptacles are available in 20 amp duplex GFI and 20, 30 and 50 amp twist-lock®
- Electrical distribution block - direct feed - maximum wire size 2Ø
- Plastic three sided lens
- Thermo plastic receptacle covers
- Flat top
- Brackets for either round or square piling
- Powder coated white
- 15 year unconditional warranty on structural integrity of casing
- Listed by qualified testing agency

Options:

- Power block - loop feed - maximum 2Ø wire
- TV/telephone receptacles
- PL-7 fluorescent light and photo cell
- Cone top
- Natural finish and custom colors available

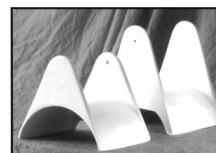
Dockside Electrical Pillars (Options)



Electric Kilowatt Meters



Water Meters



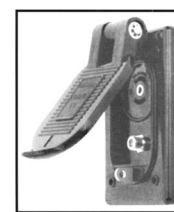
Hose Holder/Cable Bracket



Hose Faucets



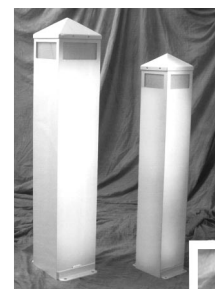
100 Amp - Pin And Sleeve



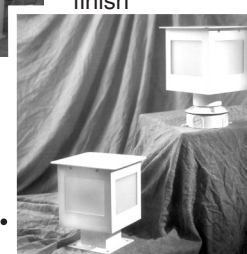
TV/Telephone Lockable Receptacles



Dockside Lighting



Bollard Styles (LB-B)



Cage Styles (LB-C)



- Free standing or post mounted
- Distributes light through plastic windows (360° light)
- All aluminum casing
- Powder coated finish
- Economical fluorescent tube
- Designed and manufactured for use in a corrosive salt water environment
- Lighting listed by qualified testing agency