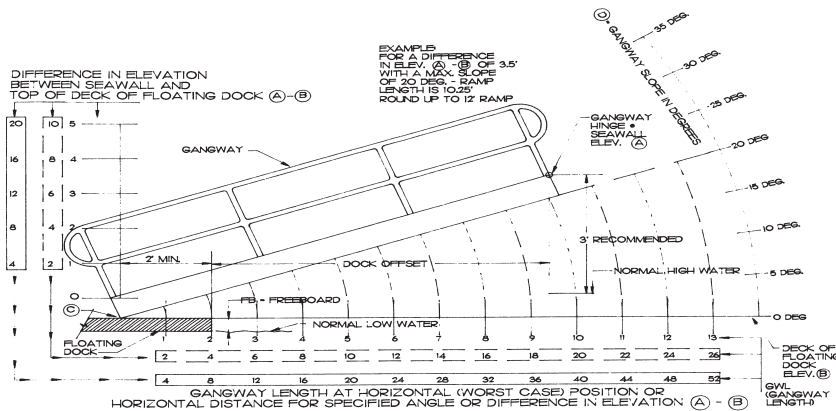




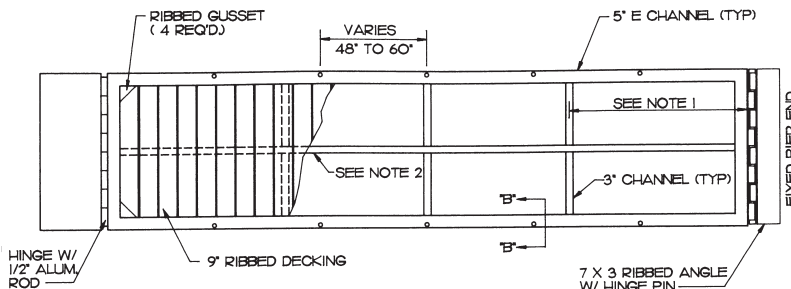
Gangway Data



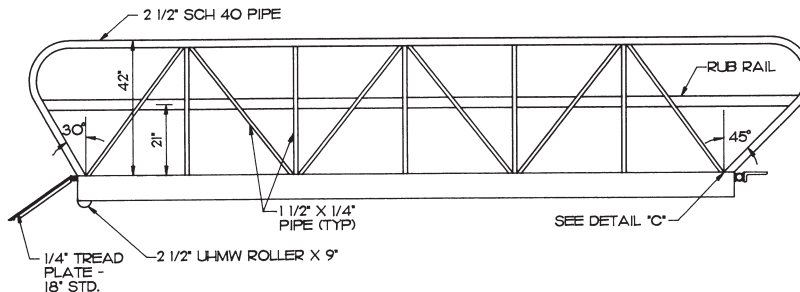
NOTES:

- 1). ELEV. A IS USUALLY AT LEAST 3'-0" ABOVE NORMAL HIGH WATER.
- 2). POINT C SHOULD NOT BE CLOSER THAN 2'-0" OF THE END OF THE FLOATING DOCK AT NORMAL LOW WATER.
- 3). FOR A MAX. SLOPE OF 20 DEG., MIN. GANGWAY LENGTH - $2.93 (A - B)$
- 4). FOR A MAX. SLOPE OF 20 DEG., TRAVEL DISTANCE = $.175 (A - B)$
- 5). FOR A MAX SLOPE OF 20 DEG., MAX., DOCK OFFSET = $(.94 X GWL) - 2'$
- 6). GANGWAY SIZING CHART ASSUMES GANGWAY IS FIXED VIA HINGE AT A AND FREE TO MOVE ON WHEELS OR ROLLERS AT C
- 7). GWL - GANGWAY LENGTHS ARE NORMALLY ROUNDED TO THE NEXT HIGHEST EVEN FOOT (18, 20, 22, ETC.) FOR STANDARD SIZES.
- 8). NORMAL FREEBOARD (FB) REQUIREMENTS RANGE FROM 15" - 18" FOR FRESHWATER DOCKS AND 18" - 21" FOR SALTWATER DOCKS, HOWEVER, THIS REQUIREMENT IS VERY SITE AND USE SPECIFIC AND, SUBJECT TO LOCAL CUSTOM.
- 9). APPLICABLE FORMULAS - $GWL - (DIST A - B) / \sin(ANGLE)$ TRAVEL DISTANCE - $GWL - (DIST A - B / \tan(ANGLE))$ DOCK OFFSET - $(\cos(ANGLE) X GWL) - 2'$

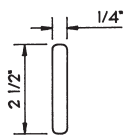
Dura Ramp I



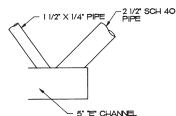
Plan View



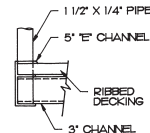
Elevation



Rub Rail



Detail "C"



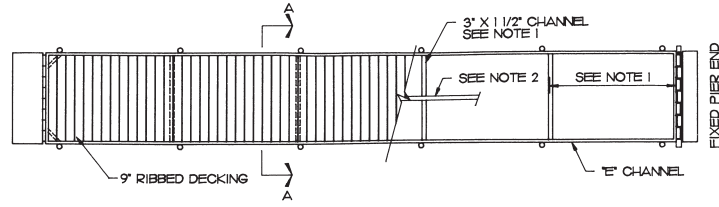
Section B-B

NOTES:

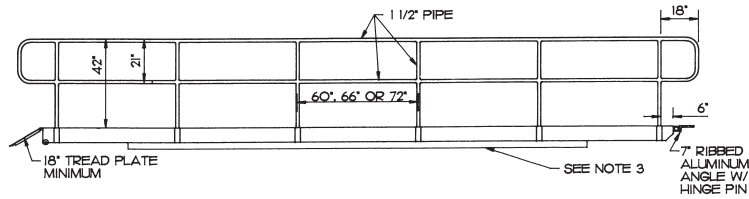
1. VARIES WITH LENGTH OF GANGWAY BUT NOT TO EXCEED 6' O.C.
2. 3" CHANNEL CENTER STRINGER ON GANGWAYS OVER 4' WIDE.
3. STANDARD UNITS ARE FROM 4' TO 6' WIDE & 20' TO 50' LONG. OTHER UNITS PROVIDED UPON REQUEST.



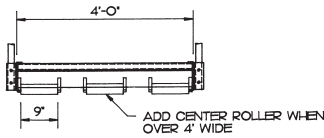
Dura Ramp II



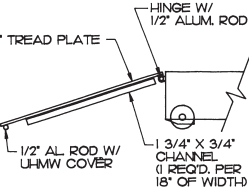
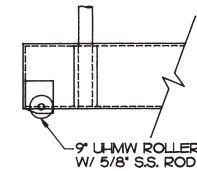
Plan View



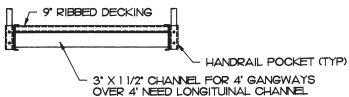
Elevation



Roller Detail



Optional Ramp

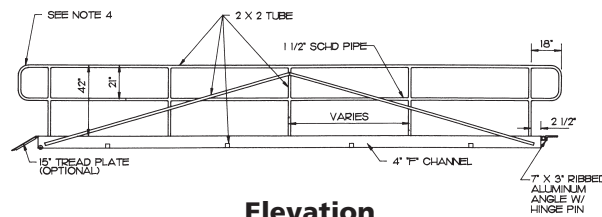


Section A-A

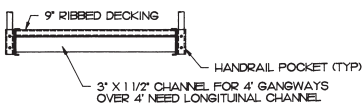
NOTES:

1. VARIES W/ LENGTH & WIDTH OF GANGWAY
2. LONGITUDINAL SIZE DEPENDS ON SIDE MEMBER, CROSS MEMBER & WIDTH OF GANGWAY
3. 2 X 1-1/2" BAR MAY BE REQ'D DEPENDING ON LENGTH & WIDTH OF GANGWAY
4. GAP BETWEEN DECKING IS NOT TO EXCEED 3/8"

Dura Ramp III



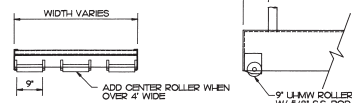
Elevation



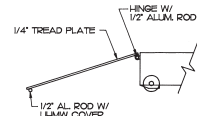
Section A-A

NOTES:

1. VARIES W/ LENGTH & WIDTH OF GANGWAY
2. MAXIMUM WIDTH IS 6'
3. GAP BETWEEN DECKING IS NOT TO EXCEED 3/8"
4. FABRICATED ENDS MAY BE LEFT OFF AT DESIGNERS REQUEST



Roller Detail



Optional Ramp