



## JIM-BUOY®

**Regulatory Buoys, Channel Markers and River Buoys**  
**Available In A Wide Range Of Sizes And Styles For Almost Any Marine Application!**



#428-R



#425-R



#425



#426



#410-X



#410



#4409



#4410



#506 Dredge Buoy-

Complies with U.S.C.G. Reg. 88.15, 3 mile visibility with bright, white light. One set (3) Alkaline D-cell batteries warranted to last 1 year of continuous use without change. Size: Ballast, 22", Buoy, 18" diam. x 24" ht., Lightholder, 22" (light priced separately).

**#428-R - Where HUGE EXPOSURE is required!** Giant 15" diameter cylinder rises more than 40" above the water line with jumbo 19" diameter base providing utmost stability. Overall height is 62-1/2". Features proportionately large daymarks for maximum visibility. Designed to float upright with 35-40 lbs. of chain or equivalent weight. If more internal ballast is required, please advise. The 5/8" galvanized steel anchor eye bolt is securely bonded-in. 2.3 lb. density polyurethane foam extends 8" above water line to insure permanent floatation.

**Model #428-R,** Shipping wt. 65 lbs., single pack.

**#425, #425-R, #426 Series Buoys** - Designed to float upright with 35-40 lbs. of chain or equivalent weight. If more internal ballast is required, please advise. Full 12" diameter cylinder rises 40" plus above the water line for excellent visibility. The 13" diameter base assures complete stability under all conditions. Closed-cell polyurethane foam extends 8" above the water line. Features 5/8" galvanized steel eye bolt at extreme bottom of the buoy; a large diameter through-hole is provided for near surface

anchor use—special eyebolts with swivels for this attachment are also available.

**#425-R, Regulatory Buoy** - All white impregnated, molded-in color. May be ordered with standard Jim Buoy Vinyl Daymarks. Ship. wt. 25 lbs., single pack.

**Model #425, Can** - Available in red or green, impregnated, molded-in color, specify with order. Ship. wt. 25 lbs., single pack.

**Model #426, Nun** - Available in red only, impregnated, molded-in color. Ship. wt. 25 lbs. single pack.

**#410 Jim Buoy's economy model** - With 9" diameter x 61-1/2" height has excess of 37" above the water line for good visibility. Designed to float upright with 35-40 lbs. of chain or equivalent weight. If more internal ballast is required, please advise. The 1/2" galvanized eye bolt is totally recessed in the base. Tough CJ-37 Rock hard outer shell assures greatest strength and durability. The polyurethane foam extends 8" above base for positive upright floatation. Jim Buoy's Daymarks are available for this great new model.

**Model #410** - Ship. wt. 50 lbs., single pack, UPS O.K.

**#410-X, (For deep water requirements)** - Same construction and favorable pricing as the #410 but features a 71-1/2" height for use in extremely deep water anchoring where lengthy (heavy) anchor chains are required.

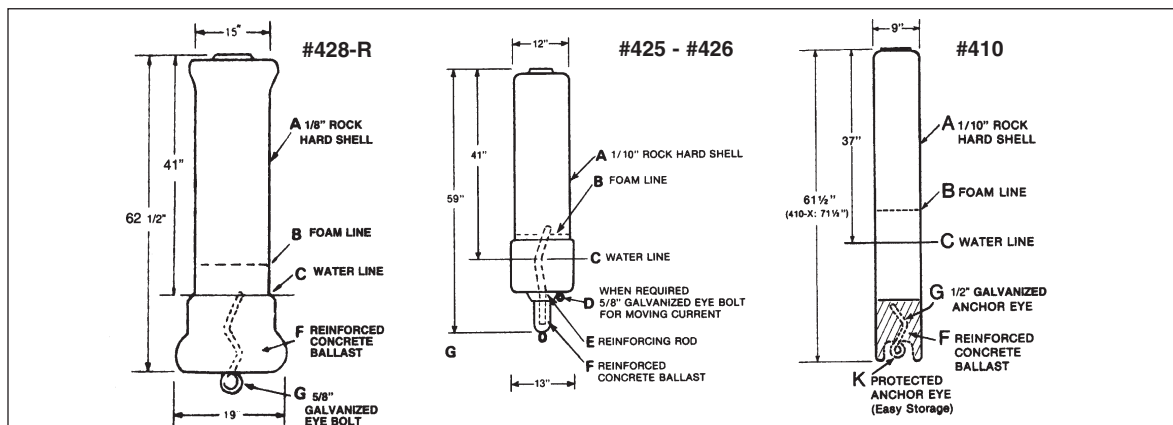
**Model #410-X** - Ship. wt. 58 lbs., single pack.

**#4408** - Same basic construction as #4410, 4409; 12" diam. x 23" height.

**#4409/4410, Jim Buoy's new "Fat Buoys"** - Requires 8 lbs. of chain or equivalent, urethane foam filled. Hot-dipped 1/2" galvanized hardware. Same rugged construction as all Jim Buoy channel markers.

**Model #4409, Can** - Green molded-in color. Ship. wt. 16 lbs., 1 per ctn.

**#4410, Nun** - Red, molded-in color. Ship. wt. 16 lbs., 1 per carton.




# JIM-BUOY®

## Regulatory Buoys, Channel Markers and River Buoys


Feature for feature, you'll agree Jim Buoy offers more...  
**CJ-37 ROCK HARD OUTER SHELL-Almost indestructible!**  
**TOTALLY INTERNAL BALLAST-No exposed concrete!**  
**SYSTEM #10 VINYL DAYMARKS-Guaranteed 5 years!**  
**GALVANIZED STEEL EYE BOLT-resists rust!**

**JIM BUOY #9000 LIGHT AVAILABLE ON ALL MODELS (except #505 & #423-0)**



Featuring Jim Buoy's exclusive **ROCK HARD SHELL!**

The CJ-37 space age shell that's almost indestructible-resists the hardest blows, acid & weather extremes!



**#3000 Fast Water Buoy**

Features tough CJ-37 Rock Hard outer shell with solid urethane foam core. Large 24" diam. base is 9-1/2" high. Riser is 12-1/2" diam. x 47-1/2" high. All standard daymarks at no charge. Options available.

1. Pickup eye
2. Extended 24" ballast
3. Regular dropped forged swivel
4. Radar Reflector
5. Lights

single pack, options determine ship. wt., please inquire for complete info.



#4408



#427-R



#427



#427-N



#427-River Buoy



#505



#423-O

**#427 Series - Featuring the finest quality at super prices!** All models provide outstanding visibility with their large 10" diameter cylinder rising 40" above the water line! The huge 19" diameter base assures maximum stability in the most turbulent waters. All models are designed to float upright with 35-40 lbs. of chain or equivalent weight. If more internal ballast is required please advise. The unit utilizes Jim-Buoy's tough 1/10" CJ-37 Rock Hard outer shell for years of rugged service.

**#427, River Buoy** - Readily adapts for use in swiftest waters when equipped with the special off-set galvanized steel eye bolt.

**#427, Can** - Green only, impregnated, molded-

in color. Ship. wt. 38 lbs., single pack.  
**#427-R Regulatory Buoy** - All white, impregnated, molded in color. May be ordered with Jim Buoy Vinyl Daymarks listed below. Ship. wt. 38 lbs., single pack.

**#427-N, Nun** - Red only, impregnated, molded in color. Ship. wt. 38 lbs., single pack.

**#427, River Buoy** - May be ordered with Jim Buoy vinyl Daymarks listed below. Ship. wt. 38 lbs., single pack.

*Note: All #427 series buoys will ship UPS!*








**#505, Spar Buoy** - Usually used where many buoys are required and price a prime consideration. Features the Jim Buoy CJ-37 Rock Hard

outer shell and solid urethane foam core. Size: 6-1/2" x 31".  
**Model #505 - Spar Buoy**, Ship. wt. 6 lbs., single pack, UPS O.K.

**#423-O, Barrier Float** - Solid high density polystyrene foam body coated with white marine enamel. Available with orange vinyl bands and "SWIM AREA" decal only. Features 1/2" galvanized steel eye bolt securely molded-in. Rope hole is reinforced with PVC pipe passing through at water line.

**#423-O** - Ship. wt 38 lbs., 3 per pack.

### JIM-BUOY® Vinyl Daymarks For all Jim Buoy Regulatory Buoys plus Can and Nun Channel Markers

Regulatory Buoys, Models #410, #410X, #425R, #427R, #428R, #3000 Channel Markers						
Controlled Area  5 MPH NO WAKE SLOW SPEED SLOW NO WAKE	Exclusion Area  KEEP OUT NO BOATS NO SWIMMING SWIM AREA SKI AREA DAM FISHING NO FISHING NO SKIING	Danger-Hazard  REEF DANGER ROCKS STUMP HAZARD SHOALS DANGER DAM AHEAD	 ROCKS OR UNDERWATER OBSTRUCTION	 RESTRICTED TRAVEL	 UPSTREAM GREEN ON LEFT	 UPSTREAM RED ON RIGHT
OVER 200 ADDITIONAL SYMBOLS AVAILABLE - NO CHARGE						
See complete System #10 Daymark Information -						

